



Wireless Range Extender Kit (for IntelliTouch ScreenLogic)



Installation Guide

Technical Support

Contact Technical Support at:

Sanford, North Carolina (8 A.M. to 5 P.M.)

Phone: (800) 831-7133

Fax: (919) 566-8920

Moorpark, California (8 A.M. to 5 P.M.)

Phone: (800) 831-7133 (Ext. 6312)

Fax: (805) 553-5515

Web site: **visit www.pentairpool.com**

Related IntelliTouch Manuals

IntelliTouch ScreenLogic User's Guide (P/N 520493)

© 2005 Pentair Water Pool and Spa, Inc. All rights reserved.

1620 Hawkins Ave., Sanford, NC 27330 • (919) 566-8000
10951 West Los Angeles Ave., Moorpark, CA 93021 • (805) 523-2400

This document is subject to change without notice.

Trademarks and Disclaimers. The trademark IntelliTouch, is a registered trademark of Pentair Water Pool and Spa Inc. Other trademarks and trade names may be used in this document to refer to either the entities claiming the marks and names or their products. Pentair Water Pool and Spa Inc. disclaims proprietary interest in marks and names of others.

P/N 520582 Rev A August 2005

Contents

Introduction	1
Try to avoid using AC power strip and surge protectors	1
Adding the Range Extender Kit for Large Home and Properties	1
Where do I locate the Range Extender	3
Step 1: Installing the Range Extender Kit	4
Troubleshooting	4
Step 2: Connecting to the Range Extenders	6
To manually establish a connection from your Screen Tablet	6
To manually establish a connection from your PDA	8

Blank Page

Introduction

The Range Extender kit is based on the HomePlug standard, an industry consortium ensuring the interoperability of power line devices from multiple manufacturers. The Range Extender kit uses a home's existing electrical wiring to provide a communications network for your ScreenLogic wireless Tablet and/or PDA. If your wiring is modern and up to code, there is no need to rewire outlets or to install special filters. The Range Extender kit works with 110 VAC two-prong or three-prong electrical outlets.

The Range Extender kit reliably provides coverage for considerable distances in a home as large as 5,000 square feet. Depending on the quality of your home's AC wiring, wireless coverage can be reduced due to noise in your home's electrical system. Since noise is not directly distance-dependant, you may get considerably less (or, in many cases, considerably more) coverage. In many cases, the technology works across multiple phases and circuit breakers.

Try to avoid using AC power strip and surge protectors

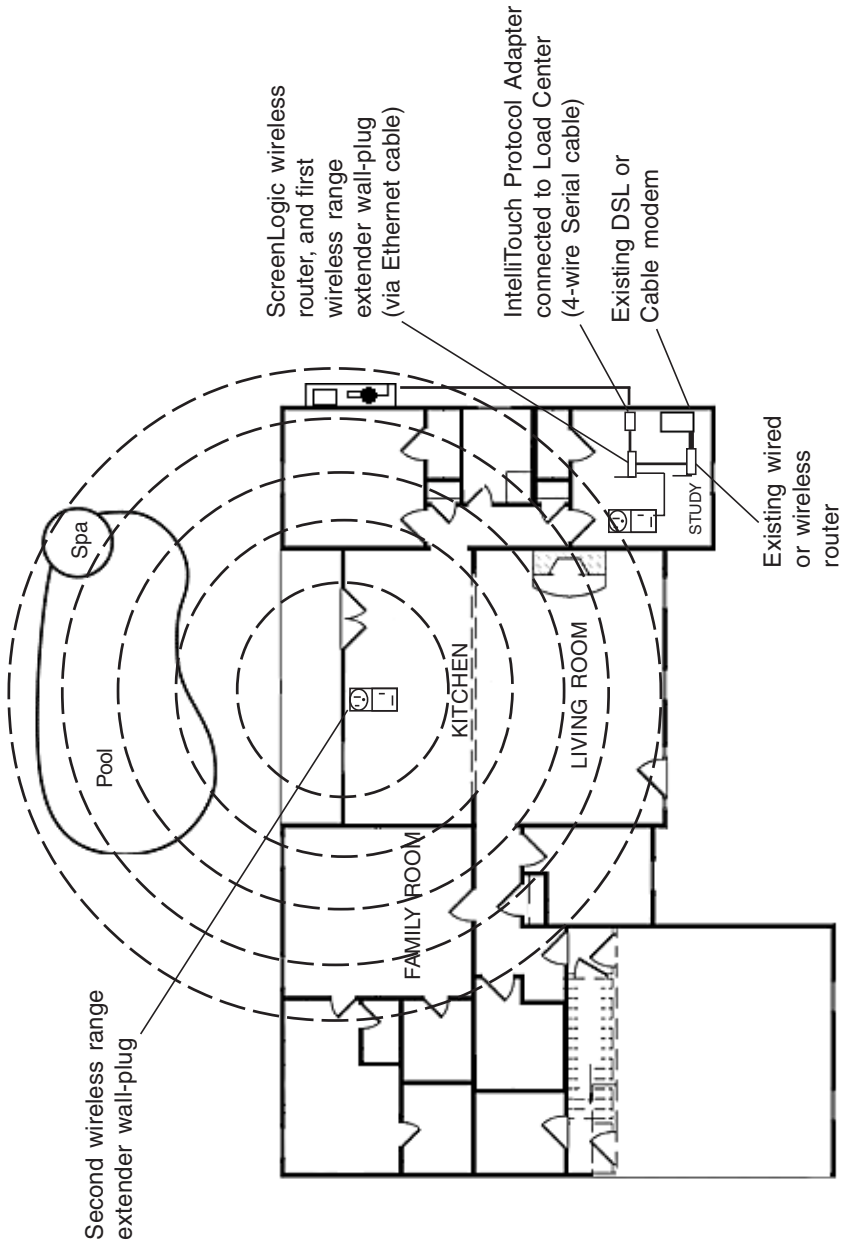
Where possible, plug the devices directly into the AC electrical outlet. While inexpensive power strips and surge protectors may have little effect, more expensive and effective models may block the Range Extender's signal.

Adding the Range Extender Kit for Large Home and Properties

For larger homes and properties it may be necessary to install the wireless Range Extender kit (P/N 520561). The wireless Range Extender kit transfers the wireless signal for better coverage where you primarily use your Tablet and/or PDA. The wireless Range Extender kit consists of two wall-plugs that plug into your home's AC power wall outlets. The first wireless Range Extender wall-plug connects to the ScreenLogic wireless router via an Ethernet cable (RJ45/CAT5). The second wall-plug does not require connection wires. This wireless Range Extender wall-plug picks up and broadcasts the ScreenLogic wireless router signal for better coverage in the area of the home where the wireless Tablet and/or PDA are primarily used (see diagram on page 2 for recommended location for Range Extenders location).

Advantages when using Range Extenders:

- Better wireless coverage in the area where the Tablet and/or PDA will be primarily used. Use your home's electrical wiring instead of running an Ethernet cable.

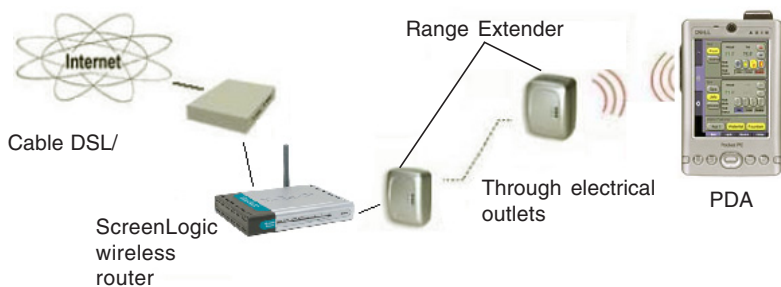


Recommended location for Range Extenders

Where do I locate the Range Extender

If it is not practical to place the ScreenLogic wireless router close to the primary operating location of your wireless Tablet or PDA, you can purchase a Range Extender kit. This kit includes two wall plugs; the Ethernet Bridge and the wireless Access Point that plug into your home's AC wall outlets. With the Range Extender kit, the wireless network can originate at any point of your choosing within your home. There are no visible wires and no desk or floor space consumed allowing it to blend into your home decor.

For example, if your wireless Tablet and/or PDA do not reliably connect to the ScreenLogic wireless router because your ScreenLogic wireless router is located in your study (upstairs in the front of your home) and you primarily use your Tablet and/or PDA in the family room (downstairs in the back of your home), the Range Extender kit will resolve your wireless connection issues. Simply plug the Range Extender with the Ethernet RJ45 connector into an electrical wall outlet near your ScreenLogic wireless router in your study and run an Ethernet cable from this Range Extender to Port 1-4 on your ScreenLogic wireless router. Then plug the other range extender into an electrical outlet in or near your family room.



Step 1: Installing the Range Extender Kit

For larger homes and properties, you may need to use the wireless Range Extender kit (P/N 520561) to transfer the wireless signal to the room near where the wireless Tablet and/or PDA will be primarily used. The setup diagram on page 8 shows the wireless Range Extender connection.

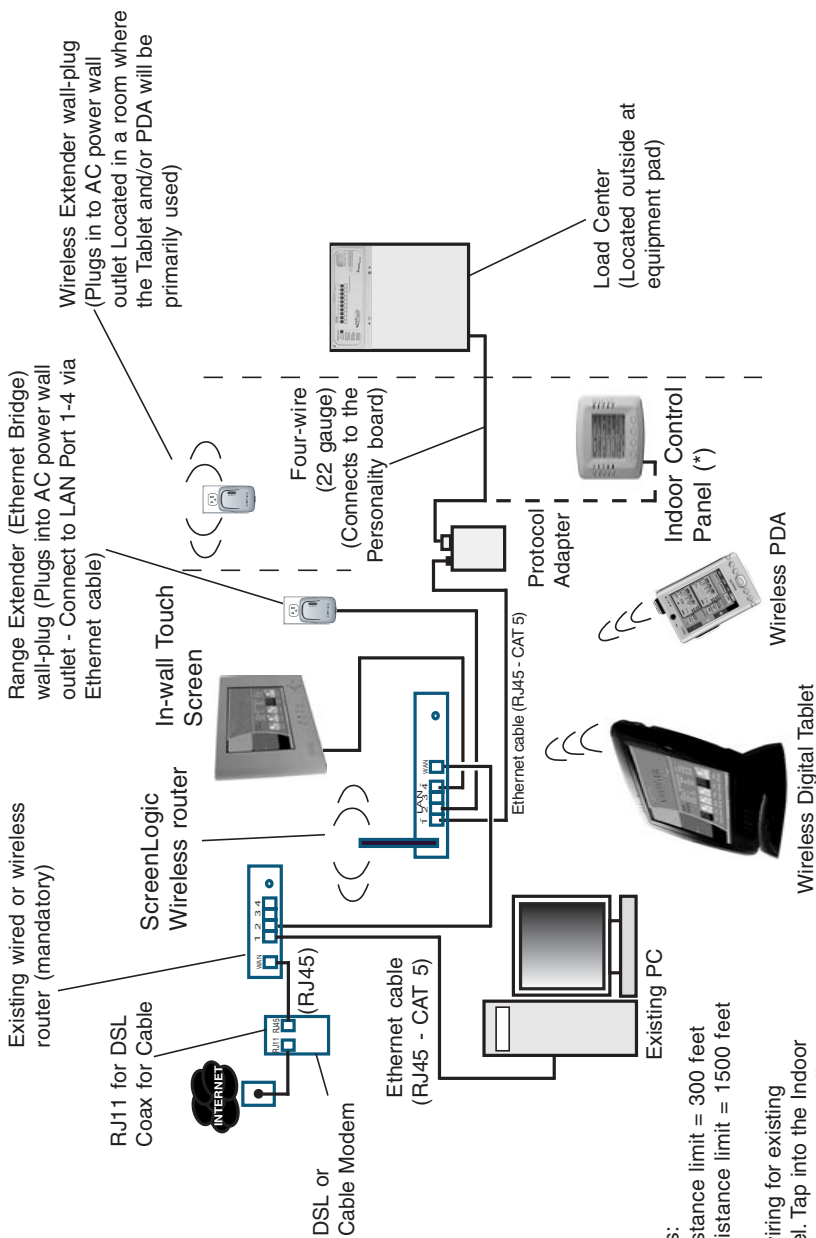
To install the wireless Range Extender wall-plugs:

1. Connect the Ethernet cable (RJ45/CAT5) from the Range Extender that has the Ethernet jack, to LAN port 1-4 on the ScreenLogic wireless router.
2. Plug this Range Extender wall-plug into an AC power wall outlet near the ScreenLogic wireless router.
3. Plug the other Range Extender wall-plug into an AC power wall outlet located in a room where the wireless Tablet and/or the PDA will primarily be used. When all three LEDs on the Range Extender are lit, the installation is complete.

Troubleshooting

If the middle green LED is not lit, this indicates that the Range Extenders are not communicating with each other. Check the above installation steps again and verify the following:

- Unplug both Range Extenders then plug them back in.
- Ensure that both Range Extenders are directly plugged into a working AC power wall outlet. Power strips can filter the signal. While inexpensive power strips and surge protectors may have little effect, more expensive and effective models may block the Range Extender's signal.
- If neither of the above steps resolve the problem, try moving the Range Extender closer to the Range Extender that is plugged into the ScreenLogic wireless router.



Cable Distant Limits:

- Ethernet cable distance limit = 300 feet
- Four-wire cable distance limit = 1500 feet

Note: (*) Optional wiring for existing Indoor Control Panel. Tap into the Indoor Control Panel connector or pig tail off the four-wire cable connected to the Personality board.

Step 2: Connecting to the Range Extenders

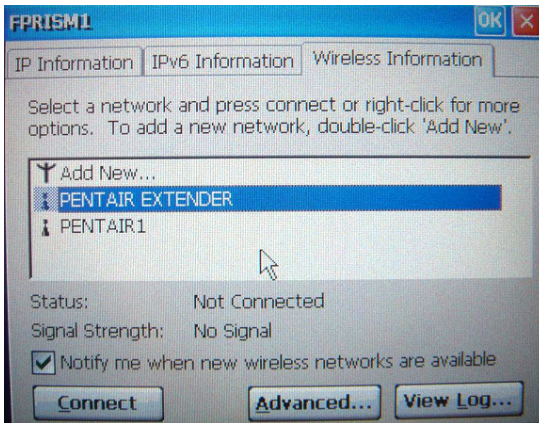
After installing the Range Extenders you need to setup a wireless connection from your ScreenLogic Tablet and/or PDA to the Range Extenders.

Your Tablet and/or PDA should already be configured to automatically connect to the ScreenLogic wireless router.

Note: A red X displays on top of the Internet connection icon in the system task tray indicates no wireless connection to the wireless router.

To manually establish a connection from your Screen Tablet

1. Double-tap the wireless icon with the stylus. A window pop up.
2. Tap the “Wireless Information” tab. On this screen you should see the ScreenLogic wireless router SSID “PENTAIRx” (where x=1 through 9) and “PENTAIR EXTENDER” the SSID for the Range Extender.



3. Select PENTAIR EXTENDER and tap the **Connect** button. The “Wireless Network Properties” dialog is displayed.

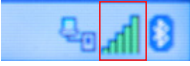
4. Tap the “The key is provided automatically” to clear the check box.
5. From the screen keyboard, enter **5555599999** (10 digits total) in the “Network Key” field. For security, the PDA uses WEP encrypted and Open authentication.



6. Tap **OK** to save the settings and exit the dialog.
7. The Tablet should connect automatically to the Range Extenders.
8. Save the correct settings in the registry. Tap **Start > Control Panel > Save Registry**. Tap **OK** twice to save and exit.

To manually establish a connection from your PDA

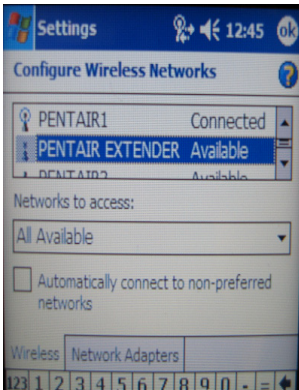
1. Tap the wireless icon (vertical bars) in the lower right corner of the screen.



2. Tap “Edit Wireless Profiles” at the bottom of the screen.



3. Tap PENTAIR EXTENDER in the available wireless network list.



4. Tap the “Network Key” tab.

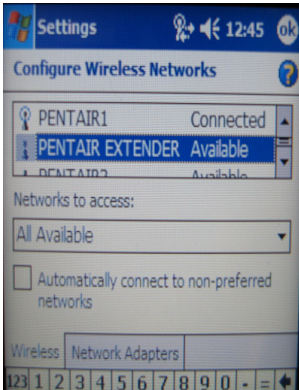


5. Tap the “The key is provided automatically” to clear the check box.
6. From the screen keyboard, enter **555599999** (10 digits total) in the “Network Key” field. For security, the PDA uses WEP encrypted and Open authentication.



7. Tap **OK** to save the setting.

8. Tap and hold PENTAIR EXTENDER in the available wireless network list. Select **Connect** from the pop up selection.
9. Tap **OK** twice to exit. Your PDA should be connected to the Range Extenders.



Notes

