

FIBERworks[®] Lens Assembly Installation Instructions

STOP!

Read and follow all instructions!

We recommend that all FIBERworks lens assemblies be installed by trained and certified FIBERworks dealers only.

If you have any questions please call our service hot line, Monday through Friday,
7:30 a.m. to 4:30 p.m., at **(800) 831-7133**

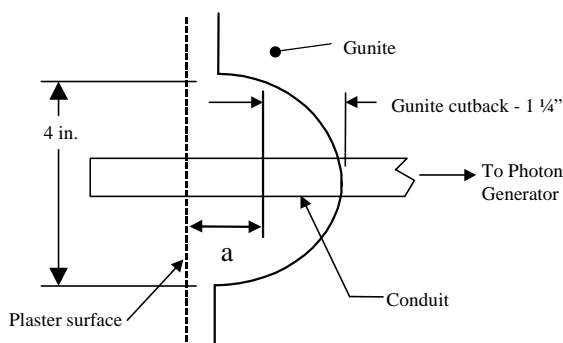
Installing the Lens Housing

- FIBERworks lens housings are installed the same way water return fittings are installed.

! CAUTION

DO NOT use excessive glue. Excess glue can overflow onto the o-ring sealing surface.

- Use only Pentair Pool Products' FIBERworks lens housings. Other fittings will not adequately seal conduit from pool water.
- Cut the conduit back as shown in the adjacent figure. Dimension "a" should be one inch (1") for a FIBERworks Standard Gunite housing, and one and a half inches (1½") for a FIBERworks Invisible Gunite housing.



Lens Selection for preOptifused[™] and Bulk Cable Assemblies

- Every lens assembly and preOptifused cable assembly now comes with a standard and wide angle lens. See lens assembly drawing to identify different lens types. Use the table below to select the appropriate lens for your application.

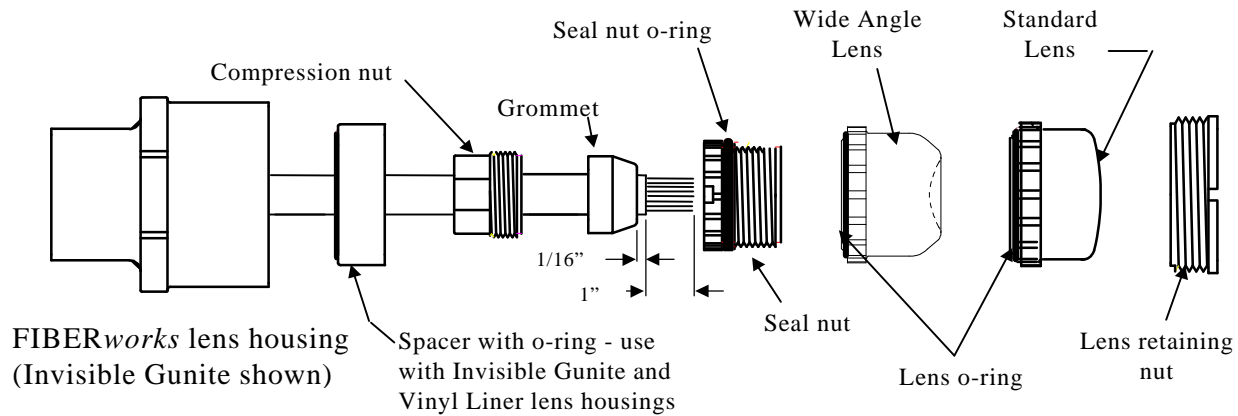
Lens Type	Lens Position				
	Shallow End	Deep End	All Side Wall	Shadow Filler	Spa
Standard	X				
Wide Angle		X	X	X	X

- Positioning on the pool/spa wall is the same for both lens types. Follow the recommendations in the Photon Generator Installation and Service Manual for proper lens positioning.
- DO NOT** use any gel on the wide angle lens. This will inhibit the light dispersion capabilities of the lens. PreOptifused cable assemblies come with the standard lens and Optifusion gel. Wipe excess gel off of cable face with a clean cloth before installing the wide angle lens.
- A new lens tightening tool with longer pins (p/n 21006500) will be required to install the wide angle lens.

Installing the Cable and Lens Subassembly

(for preOptiFused and bulk cable applications)

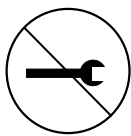
- Feed the AmerGlow cable through the conduit leaving one foot of extra cable at each end.
- If using bulk cable, assemble the lens subassembly as shown in the figure below.
 - ⇒ Terminate the cable using the OptiFusion process as described in the full instructions packed with the Photon Generator or OptiFusion Termination Kit. Any other process may dramatically reduce light output.



CAUTION

DO NOT use Optifusion gel on the wide angle lens. The gel will inhibit the light dispersion capabilities of the lens and the lens will not perform as intended.

- Make sure the lens o-ring and spacer o-ring (if applicable) are in position and the o-ring sealing surface on the inner flange of the lens housing is clean.
- Continue feeding the cable until the lens assembly is about 1/2" away from the seated position.
- Place the lens retaining nut onto the lens and **PUSH** the lens into place.
- Hand tighten the lens using the lens tightening tool until the o-ring is seated.
 - ⇒ For Standard Gunite and Fiberglass lens housings (which do not use the spacer and spacer o-ring), **hand tighten** the lens retaining nut 1/4 turn past the seated o-ring position.
 - ⇒ For Invisible Gunite and Vinyl Liner housings (which use the spacer and spacer o-ring) **hand tighten** the lens retaining nut 1/2 turn past the seated o-ring position.



CAUTION

DO NOT over tighten lens retaining nut. Damage to lens assembly may result in leakage of pool water into conduit.

Save These Instructions